



LEADERS IN METACOGNITION

A year long online course developing leaders of metacognition for your school. Incorporating two full days of training, termly 1-2-1 sessions and unlimited asynchronous support.

The opportunity to lead a departmental or whole school metacognition project, with 'Mr Metacognition' on speed dial for support.



Course Day 1 - September 2024

01

Covering the rationale of metacognition, metacognitive theory, metacognitive strategies, project development and implementation.



2024-2025 1-2-1 Support

02

1-2-1 sessions providing coaching and support to participants on their metacognitive journey. Including further input, evaluation and analysis.



Unlimited Asynchronous Support

03

All course participants will have unlimited access to asynchronous support, from 'Mr Metacognition', throughout the course of the programme.



Course Day 2 - July 2025

04

A concluding day of input, evaluating metacognitive progress in schools, tweaks to approaches and how to embed changes long-term

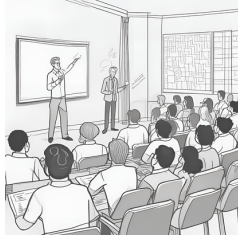
mrmcognition@gmail.com

Pricing:

- 1 participant - £500
- 2 participants - £800
- 3 participants - £1000

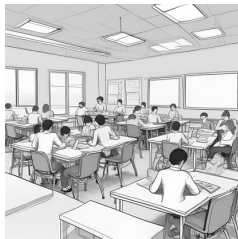
PROGRAMME BREAKDOWN

VIRTUAL TRAINING DAYS



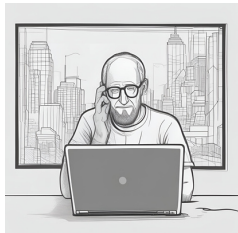
Session 1 - Input

Why metacognition matters. Understanding metacognitive theory. Identifying metacognitive strategies. Establishing school needs. Determining student abilities.



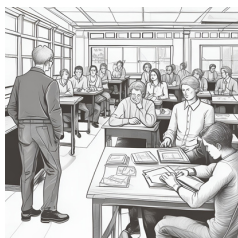
Session 1 - Output

Developing a school specific project/development. Considering stakeholders. Considering training requirements. Considering support. Determining timelines.



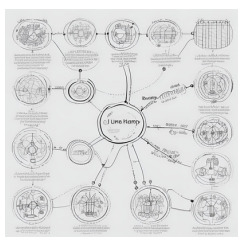
Support

3 x 1 hour 1-2-1 sessions calendared to support the participant. Feedback. Discussion. Coaching. Further input and reading as required.



Session 2 - Input

Evaluating success. Identifying areas for improvement. Considering sustainability and embedding. Further readings and support.



Session 2 - Output

Determining future plans. Establishing next steps. Considering school-specific contexts and steps towards sustainability and embedding.